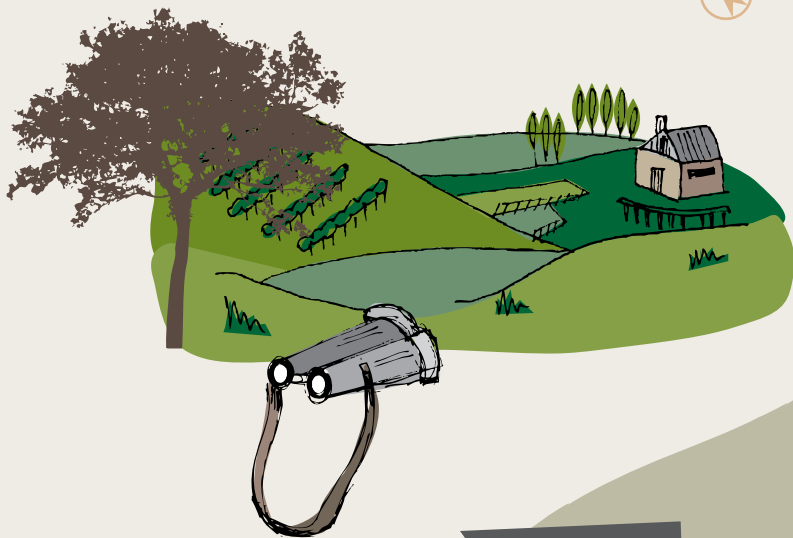


TOP VIEWS

YARRA VALLEY



LAKE MOUNTAIN ALPINE RESORT 



MARYSVILLE

Marysville-Woods Point Road

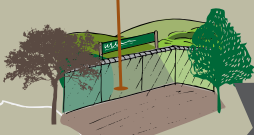
 KEPPEL LOOKOUT



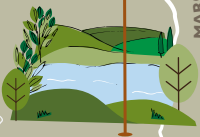
Marysville Road

Acheron Way

MT ST LEONARD



SELOVERS LOOKOUT



MT DONNA BUANG



FERNSHAW

MARONDAH HIGHWAY

Myers Creek Road

Healesville-Kinglake Road

MALLESONS LOOKOUT



Donna Buang Road

HEALESVILLE

MELBA HIGHWAY

Old Healesville Road

TARRAWARRA

Healesville-Yarra Glen Road

BADGER REEK

LAKE MOUNTAIN ALPINE RESORT



GRUYERE

Healesville-Koo Wee Rip Road

MARONDAH HIGHWAY

SUGARLOAF RESERVOIR



YARRA GLEN

Buttermans Track

One Tree Hill Rd

MEMORIAL TOWER LOOKOUT



PANTON HILL

Eltham Road

Ridge Road

Skyline Road

Paynes Road

WONGA PARK

KANGAROO GROUND

Kangaroo Ground-Warrandyte Rd

Victoria Road

Edward Road



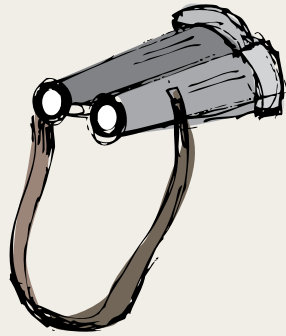
FIND YOUR SELF | MELBOURNE'S YARRA VALLEY

visityarravalley.com.au

TOP VIEWS

YARRA VALLEY

The Yarra Valley boasts breathtaking views of vineyards and farmland, waterways and forest. Its cool mornings treat the early bird to spectacular moments where the Sun kisses the Earth and awakens the fog as it rises into the sky, providing a gentle playground for the Hot Air Balloons that rise above the morning air.



Blessed with some of the most pure water supplies in Melbourne the region is a network of meandering rivers and streams that cut through the natural environment on the backdrop of the Great Diving Range.

If you want to capture a stunning photograph at dawn or dusk or just take time out to be inspired by nature in the clean mountain air, here are a few great places to start. If you are planning of visiting a few wineries then you will also be spoilt for choice with most offering great vantage points to take in the Yarra Valley.

Keppels Lookout

Keppels Lookout, accessed via a walking track from the town centre or by car along Paradise Plains Road, offers stunning views of the ridge line and forests surrounding Marysville. Good views can also be enjoyed from the top of Mount Gordon Road which is accessed from the road between Marysville and Narbethong.

Sugarloaf Reservoir Lookout

A short walk from the car park and grounds is the purpose built lookout offering panoramic vistas of the reservoir and the Kinglake Ranges.

Mt Donna Buang Lookout Tower

Rising to a height of 1245 metres, Mt Donna Buang offers panoramic views, snow play and tobogganing in winter and the Rainforest Gallery part way up the mountain with its spectacular skywalk aerial walkway through the tree tops.

Mount Mary

This lookout perch provides sweeping views to the Dandenong Ranges and the Great Dividing Range. Offering 360 degree views of the Yarra Valley this will give a birds eye view of the local farmland including some of the regions most famous vineyards.

Kangaroo Ground Memorial Tower Lookout

The Kangaroo Ground War Memorial Tower is built on the highest hill in the district. It was unveiled on 11 November 1926 and is used as a fire-spotting tower in the summer. It offers 360-degree views, which take in Melbourne, the north-east suburbs and the Dandenong and Kinglake Ranges. The surrounding park has a viewing platform, toilets, picnic facilities and gardens. It is open daily and closes at dusk.

Selovers Lookout

About 4.5 km east of Healesville, along the Maroondah Highway, is a turnoff on to Sealover's Lookout. It offers a perfectly elevated vantage point for taking in the impressive Maroondah reservoir and surround Ranges. This is a must stop on your drive to the Maryville and Buxton through the Black Spur Scenic Drive.

Mt St Leonard Lookout Tower

St Leonards Road continues north as Myers Creek Road. 12 km north of Healesville is a signposted turnoff on the right into Monda Track which soon leads to a carpark from whence there is a 1.3-km walk to the summit of Mt St Leonard (1028 m) where there is a fire tower and excellent views.

Malleson Lookout

Malleson Lookout is located on Don Road, just out of the township of Healesville. Continue in a south-easterly direction beyond the intersection with Badger Creek Road and Badger Weir Road. About 4 km beyond this intersection (10 km from Healesville), on the right-hand side of the road, is Malleson Lookout.

Lake Mountain

The most popular choice is to venture up to the 1433m summit of Lake Mountain - it has the most incredible views from several lookouts and on a clear day you can see the CBD of Melbourne. Find a spot on the plateau to stop for a picnic and soak up spectacular panoramic views of the Victorian Alps to the east, across to Melbourne and over to the surrounding foothills of the Great Dividing Range to the west.