

# Try Something New

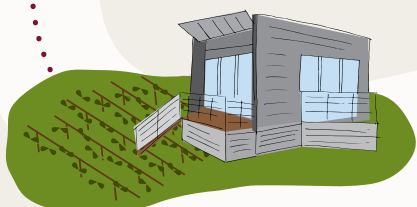
## ONE-DAY ALTERNATIVE TASTE TRAIL

Melba Highway Yarra Valley

### 3 STEELS GATE WINERY

#### Lunch & elegant wines of distinction

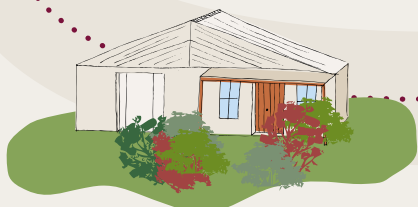
Enjoy a tasting at the cellar door and feel 'exclusive' with a special lunch menu overlooking the vines. For something new try the Bastardo or Graciano perfectly matched to your food.



### 6 STEELS CREEK ESTATE

#### Minimal intervention wines

The smallest winery in the Yarra Valley but the 5 acres of vines truly deliver on their five varieties of minimal intervention wines. Hyper boutique and hyper local, you will be chatting to the wine maker at the cellar door with a perfect view of the winery in action.



### 1 EDIBLE FOREST

#### Feed your soul

Take an Edible Forest garden tour and discover how herbs and plants can not only make food taste better; but also improve your overall health & wellbeing.



### 4 YARRA GLEN

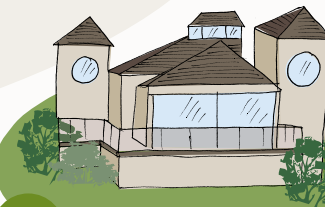
#### Historic Township

After lunch, stretch your legs as you wander the local antique shops and curiosities, many still family owned. There are no chain stores and several historic buildings to admire on this tree lined street.

### 2 SUTHERLAND ESTATE

#### All in the family

Considered one of the most delightful vineyard views in Australia, Sutherland Estate is not to be missed. Worth it for the views alone, you'll also appreciate the wines made here at this family owned operation.



### 5 YILEENA PARK

#### Boutique vineyard and smokehouse

Discover these distinctive, cool climate wines and a range of delicious cheese and condiments magically touched with the smokey infusion of French oak barrels.



### 7 DE BORTOLI

#### A once-in-a-life time dinner

Enjoy a tasting and book the award winning restaurant 'Locale' for dinner to round out a perfect Alternative Taste day.

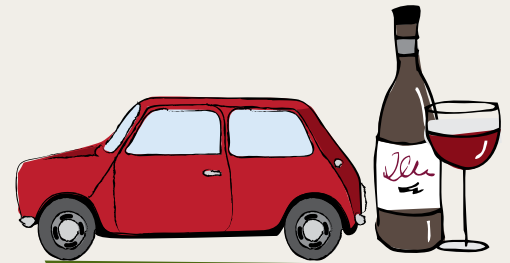


# Road Trip Yarra Valley

FIND YOUR SELF MELBOURNE'S YARRA VALLEY

[visityarravalley.com.au](http://visityarravalley.com.au)

# Try Something New



## YOUR ONE-DAY PLAN FOR THE ALTERNATIVE TASTE TRAIL

**LIKE THIS TRAIL?**  
Check out more trails at [visityarravalley.com.au](http://visityarravalley.com.au)

### Melba Highway Yarra Valley

This is a one day plan of attack for the Alternative Taste Trail. You'll visit the region's smallest winery and taste the wine and food of one of our pioneer wine families. Meander just off the Melba Highway and discover hidden cellar doors, reframe your old favourites by trying something new and travel the world in your glass as you taste international wine styles right here on the Alternative Taste Trail, Yarra Valley. Punctuate the vineyards with a trip to the township of Yarra Glen and walk (or laze) in the park either before or after being sated at lunch. A day full of flavour, adventure and friendly faces in local places.

**Check out the full trail here:**



# Road Trip Yarra Valley

### 1. Edible Forest

2164 Melba Hwy, Dixons Creek  
(+613) 5965 2395  
[edibleforest.co](http://edibleforest.co)

*Open: Mon – Sat. Tours depart daily at 10am, Sat 10am & 12pm.*

*Booking essential.*

Australia's largest interactive Edible Forest. Participate in a guided tour to learn the benefits of growing unique plants at home that are edible or medicinal.

### 2. Sutherland Estate

2010 Melba Hwy, Dixons Creek  
(+61) (0) 402 052 287  
[sutherlandestate.com.au](http://sutherlandestate.com.au)

*Open: Weekends and Public Holidays 10am – 5pm*

Sutherland Estate has one of the most spectacular vineyard sites in Australia. Enjoy a platter out on the deck overlooking the vineyard, or inside by the cosy open fire.

### 3. Steels Gate Winery

1974 Melba Hwy, Dixons Creek  
(+613) 5965 2155  
[steelsgate.com.au](http://steelsgate.com.au)

*Open: Thurs – Mon 10.30am – 5.30pm*

Situated in a picturesque hillside setting at Dixons Creek, Steels Gate Cellar Door and Restaurant is located just 60km from the heart of Melbourne; comprised of two hand-crafted boutique vineyards within the Yarra Valley.

### 4. Yarra Glen

Wander the shops and hunt for a treasure or settle in the park for a bit of exercise or relaxation.

### 5. Yileena Park of Yarra Valley

271 Steels Creek Road, Yarra Glen  
(+613) 9730 1977  
[yileenapark.com.au](http://yileenapark.com.au)

*Open: Daily 11am – 5pm*

Cellar Door with expansive deck looking over the Vineyard and beautiful Yarra Valley with daily tastings of Boutique aged wines including Topaque and range of oak smoked cheeses and meats.

### 6. Steels Creek Estate

1 Sewell Road, Steels Creek  
(+613) 5965 2448  
[steelscreekestate.com.au](http://steelscreekestate.com.au)

*Open: Friday 2pm – 6pm, Sat to Mon 10am – 6pm*

Yarra Valley's smallest vineyard, winery and cellar door invites you to a relaxed tasting of our hand-crafted wines. Sip on Yarra Valley's only zesty Colombard and be intrigued by the herbaceous bouquet of Cabernet Franc.

### 7. De Bortoli Yarra Valley Estate

58 Pinnacle Lane, Dixons Creek  
(+613) 5965 2271  
[debortoli.com.au](http://debortoli.com.au)

*Open: Cellar Door Daily 10am – 5pm*

Learn about the wines you love in a friendly environment. Taste our interesting and varied selection of wines matched with our delicious cheese platters. Locale restaurant features Italian-inspired cuisine and is ideal for family and corporate functions, weddings and events.

[visityarravalley.com.au](http://visityarravalley.com.au)