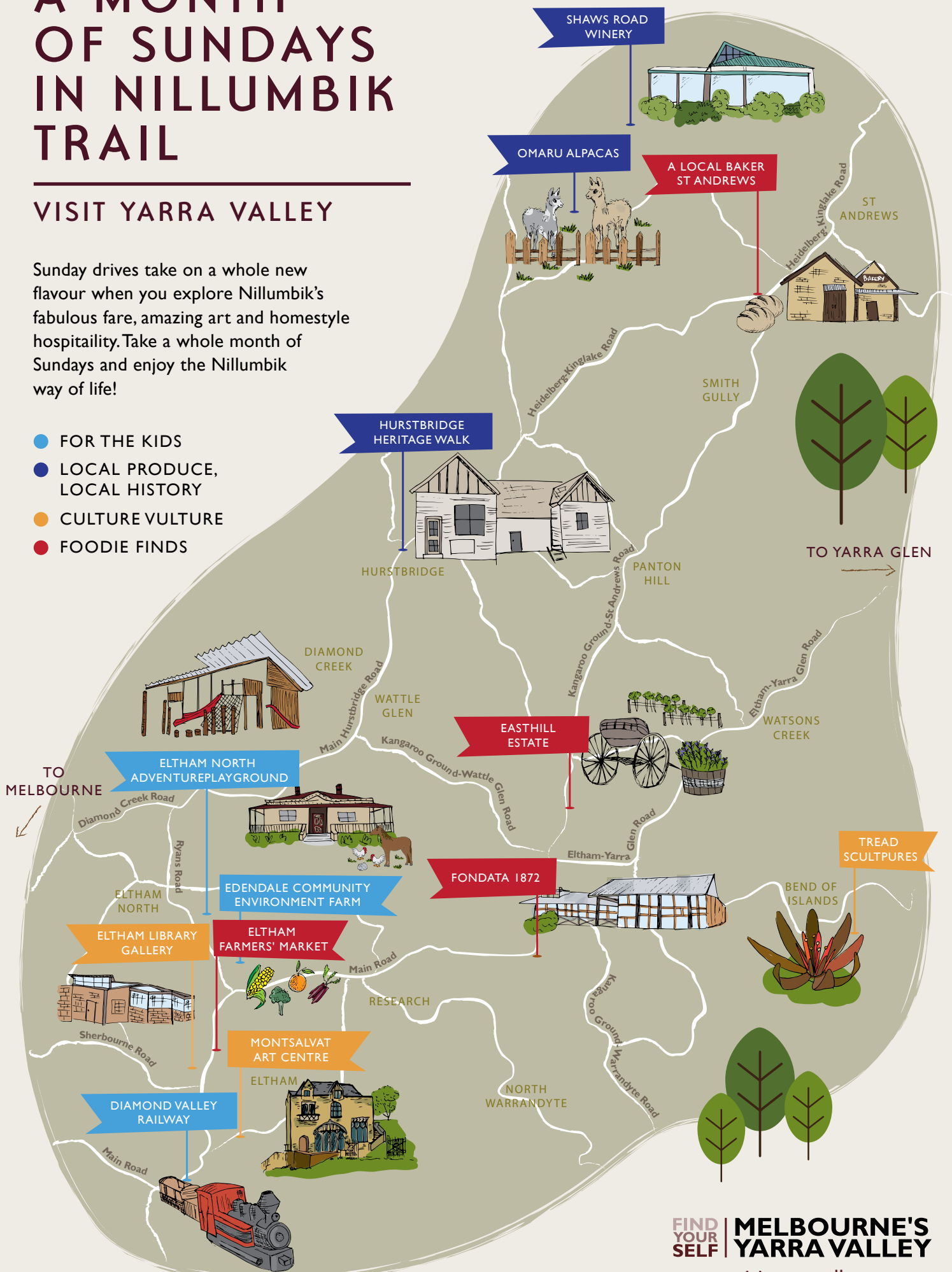


A MONTH OF SUNDAYS IN NILLUMBIK TRAIL

VISIT YARRA VALLEY

Sunday drives take on a whole new flavour when you explore Nillumbik's fabulous fare, amazing art and homestyle hospitality. Take a whole month of Sundays and enjoy the Nillumbik way of life!

- FOR THE KIDS
- LOCAL PRODUCE, LOCAL HISTORY
- CULTURE VULTURE
- FOODIE FINDS



A MONTH OF SUNDAYS IN NILLUMBIK TRAIL

VISIT YARRA VALLEY

ONE FOR THE KIDS

A day with the kids, that's budget friendly but rich in fun.

Edendale Community Environment Farm

30 Gastons Rd, Eltham
03 9433 3711 | edendale.vic.gov.au
Open: Daily 9.30am-4.30pm

Pat the Guinea pigs, feed the chooks, meet a pony, a turtle, the lizards, goats and sheep. Kids can get 'hands on the land' with real farm animals, veggie gardens and orchards to explore. Pack a picnic or enjoy the harvest in the cafe.

Diamond Valley Railway

570 Main Rd, Eltham
03 9439 1493 | dvr.com.au
Open: Sun 11am-5pm

Take the kids on a train ride - a miniature train ride. For just \$3, kids can enjoy a 10-15 minute train ride through natural bushland and tunnels in an activity that is just the right size for them.

Eltham North Adventure Playground

132 Allendale Rd, Eltham
nillumbik.vic.gov.au

Located beneath a large shelter spanning a multitude of play activities with variety for all ages no matter what the weather. Over the bridge from Edendale Community Environment Farm.

LOCAL PRODUCE, LOCAL HISTORY

Something For Everyone -
History, animals and wine.
A day for the whole family.

Hurstbridge Heritage Walk

794 Main Road, Hurstbridge
hurstbridgevillage.com.au/heritage-trail

The Hurstbridge Heritage Trail, comprises 30 sites of historical significance. Pick up a map in cafes and the newsagent. Enjoy an hour of wanderings with plenty of cafes, restaurants and shops along the way.

Omaru Alpacas

190 Hildebrand Rd, Cottles Bridge
0403 157 390 | omaru.com.au

Open: 3rd Sun of each month 11am-3pm
Get up close to cute friendly Alpacas and experience a taste of farm life. Self catered birthday parties, picnics & special occasions. Farm shop onsite.

Shaws Road Winery

225 Shaws Rd, Arthurs Creek
03 9439 4161 | shawsroad.com.au

Open: 3rd Sun of each month 11am-5pm
When you've been making wine for 30 years, you know a thing or two, right? Visit this working winery and, after a home-style meal, a wine tasting and a cellar tour in the underground wander the beautiful farmhouse gardens.

CULTURE CULTURE

Step inside a town region that lives and breaths its Arts and Culture.

Montsalvat Art Centre

7 Hillcrest Avenue, Eltham
03 9439 7712 | montsalvat.com.au
Open: Daily 9am-5pm

Australia's oldest continuously active artists' community; a place where art is made, taught & celebrated via exhibitions, festivals, concerts & workshops.

Eltham Library Gallery

Library Pl, Eltham
03 9433 3175 | <https://www.nillumbik.vic.gov.au/Living-in/Arts-and-Cultural-Development>

Open: Mon-Thu 10am-8.30pm,
Fri-Sat 10am-5pm, Sun 1pm-5pm

This community gallery features exhibits from individual artists, artist groups or organisations & curators who live, work, study or have strong ongoing links to Nillumbik.

Tread Sculptures

225 Catani Blv, Bend of Islands
0405 101 001 | facebook.com/treadsculptures

Open: 1st weekend of every month,
Sat & Sun 10am-4pm

Come and meet Tim Read, a metal sculptor using mostly reclaimed steel. Walk the sculpture trail, wander through Tim's studio, gallery and the 'boneyard' of collected steel material.

FOODIE FINDS

Your day covers all things
food and wine.

Fondata 1872

150 Eltham-Yarra Glen Rd, Kangaroo Ground
03 9712 0742 | fondata1872.com

Open: Wed-Fri 12pm-Late,
Sat-Sun 11.30am-Late

Steeped in history, Fondata 1872 is the revival of the iconic Weller's. Fondata 1872 is a destination overflowing with country charm. There is an urban sophistication with the locally inspired menu, the best-of-Nillumbik wine list and the passionate people that make Fondata so special.

Easthill Estate

100 Kangaroo-St Andrews Rd,
Kangaroo Ground
03 9712 0033 | easthillestate.com.au

Open: 1st and 3rd Sun of each month
11am-4pm

Family owned & operated unique boutique Cellar Door. Exquisite Estate grown wines complemented by a 'Platter of Preference'. Sink in for a truly memorable cellar door experience.

A Local Baker

83 Burns St, St Andrews
0430 535 494 | facebook.com/alocalbaker

Open: Thur-Fri 9am-5pm, Sat 8am-3pm,
Sun 9am-3pm

Traditional handmade organic sourdough breads & a small range of handmade organic artisan cakes & savouries, all lovingly baked in our wood fired oven.

Eltham Farmers Market

10-18 Arthur St, Eltham
0407431366 | elthamfm.org.au

Open: Sunday 9am-1pm

The Eltham Farmers' Market is one of the best genuine farmers' markets in Victoria. Offering a great choice of fresh, local, seasonal produce together with great entertainment and a special Eltham ambiance.

