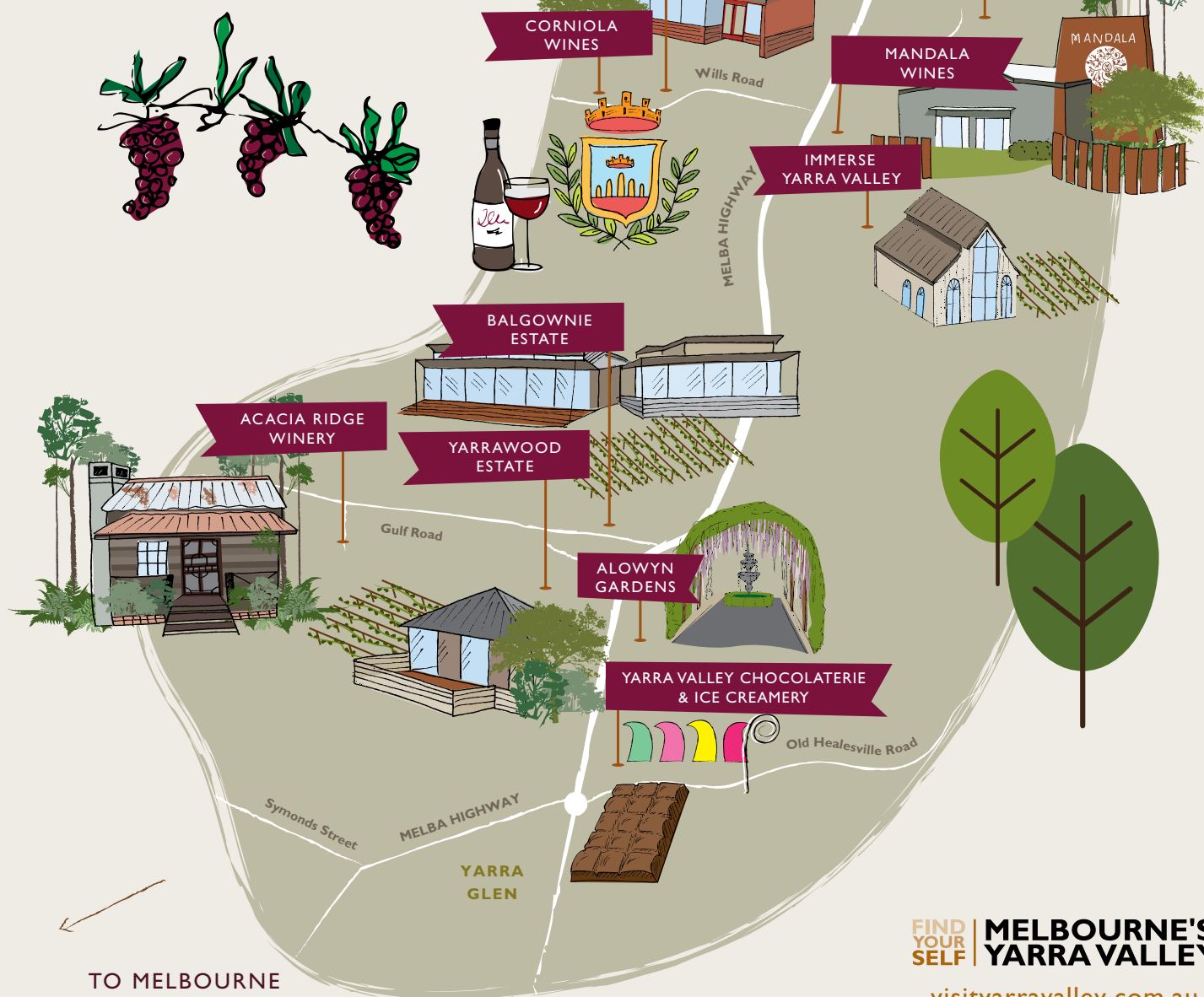


ALTERNATIVE TASTE TRAIL

MELBA HIGHWAY

Only one hour from Melbourne, the Yarra Valley is a gourmet food and cool climate wine region. While pinot noir and chardonnay are the wine heroes, a new world of wine is evolving. Meander on the Melba Highway Trail and uncover friendly, boutique cellar doors offering an unhurried taste of wine styles from around the world.



FIND YOUR SELF | MELBOURNE'S YARRA VALLEY

visityarravalley.com.au

ALTERNATIVE TASTE TRAIL

MELBA HIGHWAY

LIKE THIS TRAIL?

Check out more trails at
visityarrawallevy.com.au

Acacia Ridge **11 6**

169 Gulf Road, Yarra Glen VIC 3775
03 9730 1492 | acaciaringeyarrawallevy.com

Open: Weekends & by appointment 11am–4pm
(winter), 11am–5pm (summer)

Affordable wine tastings, casual group gatherings, DIY, catered gourmet BBQs and unique weddings are our speciality. For an authentic Yarra Valley experience visit Acacia Ridge. Classic Yarra Valley Wines. Share our passion.

De Bortoli Yarra Valley Estate

2 3 5 6 9 10 11 14

58 Pinnacle Lane, Dixons Creek VIC 3775
03 5965 2271 | debortoliyarra.com.au

Open: Cellar Door and Cheese Shop daily 10am–5pm

Learn about the wines you love in a friendly environment. Taste our interesting and varied selection of wines matched with our delicious cheese platters. 'Locale' restaurant features Italian-inspired cuisine.

Balgownie Estate Vineyard

Resort & Spa **10 11**

1309 Melba Hwy, Yarra Glen VIC 3775
03 9730 0700 | balgownieestate.com.au

Open: Daily 10am–5pm

Taste our wines including our Sparkling Shiraz in Cellar Door. Extend your stay in the luxury resort and enjoy a glass of wine from your balcony. Indulge in delicious food and wine in our restaurant overlooking the Vineyards. Ideal for Conferences, Weddings, Events, Natskin Day Spa & Onsite Activities.

Yarra Valley Chocolaterie & Ice Creamery

35 Old Healesville Road, Yarra Glen VIC 3775
03 9730 2777 | yvc.com.au

Open: Daily 9am–5pm (except Christmas day)

Set on 16 hectares, Yarra Valley Chocolaterie & Ice Creamery offers free entry, free tastings, showroom and large viewing windows where you can see European chocolatiers at work.

Immerse Yarra Valley **11**

1548 Melba Hwy, Dixons Creek VIC 3775
03 5965 2444 | immerse.com.au

Open: Saturday & Sunday 10am–4pm

Enjoy estate wines, local produce, craft beers and ciders in our rustic Cellar Door; or kick back and relax with a long lazy lunch in our award winning restaurant overlooking glorious gardens and vineyard. Immerse is also renowned for amazing weddings, events and conferences.

Mandala Wines **11**

1568 Melba Hwy, Dixons Creek VIC 3775
03 5965 2016 | mandalawines.com.au

Open: Cellar Door Mon–Fri 11am–4pm, Weekends 10am–5pm. Restaurant lunch Wed–Sun, dinner Sat

A family owned business. Taste our estate grown and single-site wines at cellar door. Dine in the glass room restaurant with vineyard views or enjoy share platters and pizza on our garden lawns with a glass of Mandala wine.

Fergusson Winery and Restaurant **6 11**

82 Wills Road, Dixons Creek VIC 3775
03 5965 2237 | fergussonwinery.com.au

Open: Daily 11am–5pm (Tues by appointment)
Restaurant serving breakfast and lunch. Dinner by appointment for groups of 10 or more people

Family-owned restaurant winery with some of the oldest vines in the Yarra Valley. Taste and purchase a variety of wines including sparkling, old vine Shiraz, Crimson sweet Shiraz, rose and fortified. Cellar Door; Restaurant, B&B Accommodation, Australiana Shop, Chapel, Weddings & Conferences.

Sutherland Estate **1 8 11**

2010 Melba Hwy, Dixons Creek VIC 3775
0402 052 287 | sutherlandestate.com.au

Open: Weekends and Public Holidays 10am–5pm

Sutherland Estate has one of the most spectacular vineyard sites in Australia. Enjoy a platter out on the deck overlooking the vineyard, or inside by the cosy open fire.

Millers Dixons Creek Estate

11 12 13

1620 Melba Hwy, Dixons Creek VIC 3775
03 5965 2553 | dixonscreekestate.com.au

Open: Daily 10am–5pm

Our cellar door overlooks the working winery along with breath taking views of the valley. Barbeque available on request. Also including a fine display of western desert aboriginal art. Try our unique 100% Yarra Valley Port.

Alowyn Gardens

1210 Melba Hwy, Yarra Glen VIC 3775
03 9730 2400 | alowynyards.com.au

Open: Daily 10am–5pm (Closed in July, Christmas Day & Boxing Day)

Alowyn Gardens provides a totally immersive experience for anyone interested in gardening and the sensory enjoyment of being in a beautiful garden. Designed with shade and comfort in mind across six distinct themes. The magnificent 100 metre long wisteria and rose covered arbor is a must see.

Yarrowood Estate Cellar Door & Cafe

3 4 11

1275 Melba Hwy, Yarra Glen VIC 3775
03 9730 2003 | yarrowood.com.au

Open: Mon–Fri 10am–5pm, Weekends 8am–5pm

Tastings, casual indoor & alfresco dining. Sharing platters, meals, house made desserts and coffee 7 days a week. Breakfast served on weekends. Lawn rugs and outdoor games provided. Live music over summer.

Corniola Wines **6 7 10 13**

100 Wills Road, Dixons Creek VIC 3775
03 5965 2393 | corniolawines.com.au

Open: Daily 11am–5pm (Closed Easter Sunday, Christmas Day & New Year's Day)

An authentic, warm experience and family owned. Complementary wines tastings with cheese & crackers at our cellar door.

HOW DO I SAY THAT?

WHITE WINES

- 1** Gewurztraminer *Alsace, France*
Geh-verts-tra-me-nur
Palate: Aromatic, floral, lychee, spice.
- 2** Vermentino *Corsica & Sardinia*
Ver-men-tee-no
Palate: Fresh fruit nose of citrus and pear; zesty mineral finish.
- 3** Riesling *Germany*
Reez-ling
Palate: Aromatic, floral, citrus



- 4** Verdelho *Portugal*
Ver-del-oh
Palate: Intense with honeysuckle & lime.
- 5** Pinot Blanc *Alsace, France*
Pee-noh Blahnk
Palate: Apple, citrus and floral.
- 6** Moscato *Northern Italy*
Moss-car-toe
Palate: Peach, apricot & fresh grapes.

RED WINES

- 7** Dolce Rosso
Dole-chay Ros-soh
Palate: ripe summer berry with residual sweetness.
- 8** Tempranillo *Spain*
Temp-ra-nee-oh
Palate: Lush, black fruits with spice
- 9** Nebbiolo *Piedmont, Italy*
Neb-ee-oh-lo
Palate: Dark fruits, violets, chocolate.
- 10** Sangiovese *Tuscany & Umbria, Italy*
Sahn-joe-vay-zee
Palate: Black cherry fruit with spice.
- 11** Pinot Noir *Burgundy, France*
Pee-noh Nwahr
Palate: Raspberries, cherries, barnyard.
- 12** Cabernet Franc *Bordeaux / Loire Valley, France*
Cab-er-nay Fronk
Palate: Raspberry and blackberry, lighter tannin.
- 13** Petit Verdot *Bordeaux, France*
Puh-tee (teet) Vere-doe
Palate: Fragrant with brambly fruits, firm tannin.
- 14** Gamay Noir *Beaujolais, France*
Gam-may No-wah
Palate: Lighter bodied with black cherries and mushroom.